

Tel: 0086-21-58223048
Fax:0086-21-58220631

Shanghai Superhouse Building Material Co., Ltd

Office Add:
Level 5, Building 10,
No.8666 Hunan Road,
Pudong New Area, Shanghai, P.R. China

Superhouse (Jiangsu) Window System LLC.

Factory Add:
No. 12 Haihong Road,
Qidong Binhai Industry Zone,
Nantong City, Jiangsu Province P.R.China

WWW.SUPERHOUSSE.COM
support@supperhousse.com



INTRODUCTION

Superhouse is for a super life. Our continuous research and development leads to offer unique solutions like bullet proof and hurricane proof and thermal insulation and so on with many innovative features, which totally meet the needs of our customers. So you aren't just stalling windows and doors. You're installing excellence.

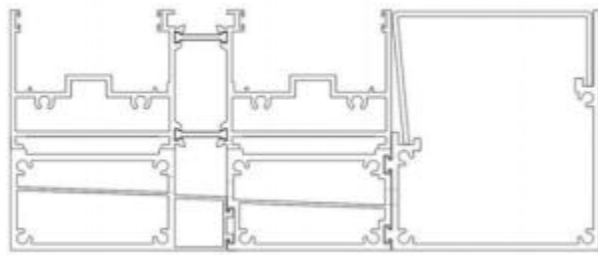
With 15 years of experience, Superhouse is one of the most advanced companies in China and in the design & window products by meet AS2047 Standard, NFRC, NOA



- Meet Australia AS2047 Standard
- Meet Australia bushfire BAL Standard
- Meet Australia AS2208 Standard
- Meet Acoustic 42dB
- Meet Bullet Proof UL752 Standard
- Meet CSA AAMA 101 NAFS Standard
- Meet Florida Products Approval
- Meet USA NFRC Standard

INTRODUCTION





SP146

SLIM SLIDING DOOR
SPECIAL LINE



Superhouse SP146 series with 2cm thickness simplification profile and with a large view. Abandon the traditional big and heavy sliding door frame, the minimalist push and pull is more close to the natural environment nearly. Higher glass to aluminum frame ratio, heat insulation performance system effectively improved. Hidden under the rail- with roller bearing, single panel load up to 500kgs. It can be make 3000mm by 3000mm per panel.

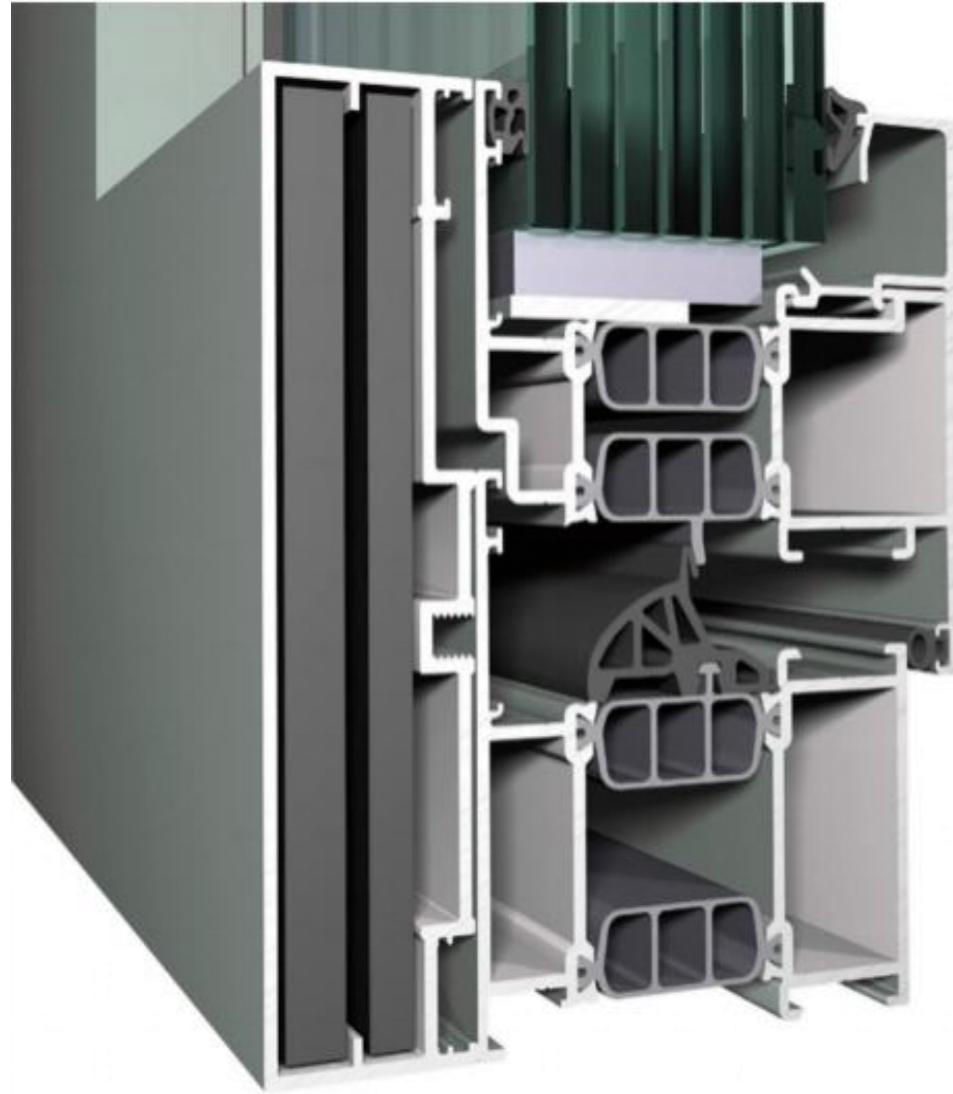
TECHNICAL DATA

Visible width (Outside)	Frame/Sash	146mm
Profile Depth	Frame/Sash	Refer to detail drawing
Depth of glass groove		
Glass Thickness		

PERFORMANCE

Thermal Insulation	$U \leq 2.4 \text{ W/m}^2\text{K}$
Acoustic Performance	$\leq 45\text{dB}$
Air Tightness	0.4
Wind Load Resistance	$\geq 0.5\text{Kpa}$
Water Penetration	500 pa
Security Level	





SP86
BULLET PROOF
SPECIAL LINE

Superhouse SP86 bullet proof system meet UL752 standard and Florida USA product building approval. The special design with reinforce steel plate and bullet proof glass. Which is popular use for hurrican area and public like embassy, army area and bank.



SP100
HINGE DOOR
COMMERCIAL

Superhouse SP100 hinge door is classic model. It can be high threshold or low threshold or without threshold. Stainless steel handle for option. Normally use for commercial area such as shop entrance door. It aslo can be escape door.

TECHNICAL DATA

Visible width (Outside)	Frame/Sash	Refer to detail drawing
Profile Depth	Frame/Sash	Refer to detail drawing
Depth of glass groove		
Glass Thickness		

PERFORMANCE

Thermal Insulation	U≤1.1 W/m2K
Acoustic Performance	≤45dB
Air Tightness	0.4
Wind Load Resistance	≥0.5Kpa
Water Penetration	900 pa
Security Level	

TECHNICAL DATA

Visible width (Outside)	Frame/Sash	Refer to detail drawing
Profile Depth	Frame/Sash	Refer to detail drawing
Depth of glass groove		
Glass Thickness		

PERFORMANCE

Thermal Insulation	U≤3.4 W/m2K
Acoustic Performance	≤45dB
Air Tightness	0.4
Wind Load Resistance	≥0.5Kpa
Water Penetration	600 pa
Security Level	



SP100 SLIDING DOOR COMMERCIAL



SP100 Sliding door system, it can be equipped with triple glass to get better sound insulation and energy-saving. This system is equipped with heavy duty and it can be load max. 300kg weight. It could create smoother and more reliable operation experience for users during the repeated opening and closing. Available with stainless steel mesh and could meet 600pa water penetration. Popular used in Australia market.

TECHNICAL DATA

Visible width (Outside)	Frame/Sash	50mm
Profile Depth	Frame/Sash	130mm
Depth of glass groove		16mm
Glass Thickness		12-30mm

PERFORMANCE

Thermal Insulation	$U \leq 3.8 \text{ W/m}^2\text{K}$
Acoustic Performance	$\leq 42\text{dB}$
Air Tightness	0.4
Wind Load Resistance	$\geq 0.5\text{Kpa}$
Water Penetration	600 pa
Security Level	

SP150 STACKER DOOR COMMERCIAL



SP150 stacker door system, it could be with triple glass to realize better sound insulation and energy-saving. This system is with heavy duty. It could create smoother and more reliable operation experience for users during the repeated opening and closing. Available with stainless steel mesh and could meet 600 pa water penetration. Popular used in Australia Market.



TECHNICAL DATA

Visible width (Outside)	Frame/Sash	50mm
Profile Depth	Frame/Sash	150mm
Depth of glass groove		16mm
Glass Thickness		12-31mm

PERFORMANCE

Thermal Insulation	$U \leq 3.4 \text{ W/m}^2\text{K}$
Acoustic Performance	$\leq 45\text{dB}$
Air Tightness	0.4
Wind Load Resistance	$\geq 0.5\text{Kpa}$
Water Penetration	600 pa
Security Level	



SP115

BI-FOLDING DOOR

COMMERCIAL



Superhouse SP115 Bi-folding door could meet design of 220,330,431,550,541,633,651,743 and so on. Also could with retractor flyscreen. It can be make 3000mm high with heavy duty hinge and with stright sash to improve aesthetics sash. Also it is the flagship product in Superhouse product system.

TECHNICAL DATA

Visible width (Outside)	Frame/Sash	30mm
Profile Depth	Frame/Sash	115mm
Depth of glass groove		22mm
Glass Thickness		21-42mm

PERFORMANCE

Thermal Insulation	$U \leq 3.4 \text{ W/m}^2\text{K}$
Acoustic Performance	$\leq 45\text{dB}$
Air Tightness	0.4
Wind Load Resistance	$\geq 0.5\text{Kpa}$
Water Penetration	600 pa
Security Level	



SP100 AWNING WINDOW COMMERCIAL

SP100 Chain winder window could be equipped with double or triple glass to realize better sound insulation and energy-saving. This system is with Australia local 125mm limited opening restrictor. Available with stainless steel mesh or flyscreen. And with Australia standard and with 900pa water penetration and popular used in Australia market.

TECHNICAL DATA

Visible width (Outside)	Frame/Sash	50mm
Profile Depth	Frame/Sash	100mm
Depth of glass groove		20mm
Glass Thickness		12-31mm

PERFORMANCE

Thermal Insulation	$U \leq 3.4 \text{ W/m}^2\text{K}$
Acoustic Performance	$\leq 45\text{dB}$
Air Tightness	0.4
Wind Load Resistance	$\geq 0.5\text{Kpa}$
Water Penetration	900 pa
Security Level	





SP130

GLASS LOUVER COMMERCIAL



Superhouse SP130 louver is popular for Australia market and which could be with the flyscreen and also Stainless steel mesh. Available for 6mm glass and 6.38mm laminated glass. It is the flagship product in Superhosue system. And which pass 150 pa water penetration for the AS2047 Standard.

TECHNICAL DATA

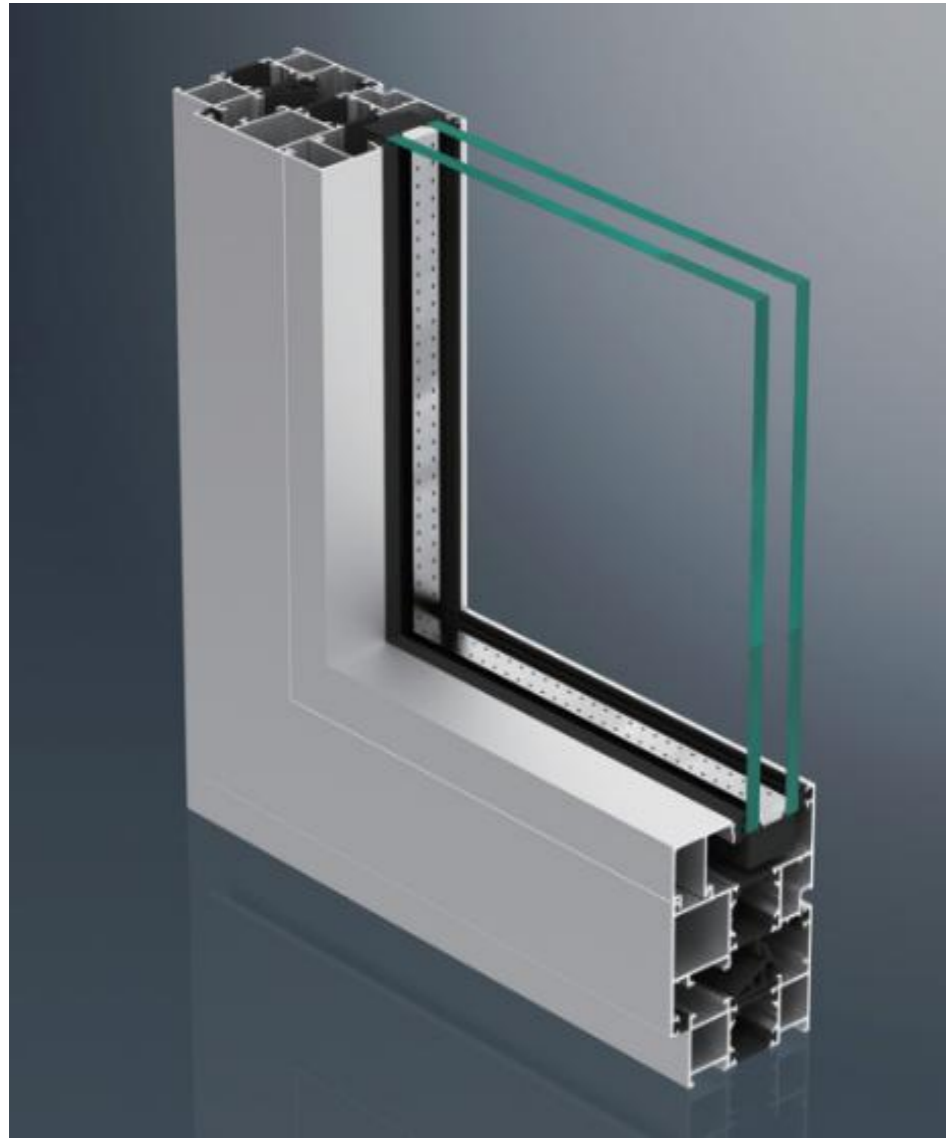
Visible width (Outside)	Frame/Sash	25mm
Profile Depth	Frame/Sash	130mm
Depth of glass groove		16mm
Glass Thickness		6mm

PERFORMANCE

Thermal Insulation	$U \leq 4.4 \text{ W/m}^2\text{K}$
Acoustic Performance	$\leq 35\text{dB}$
Air Tightness	0.4
Wind Load Resistance	$\geq 0.5\text{Kpa}$
Water Penetration	150 pa
Security Level	

SP65T

Awning
Casement
SUPER SERIES



SP65T system is excellent heat insulating function, through the adoption of 24mm thermal insulation aluminum profile, it could keep the U-value less than 1.6 W/m.K. It could not only satisfy users' strict requirement on physical function, but also realize various segmentations of windows and doors. It is popular on North American Area. Flagship product in Superhouse system

TECHNICAL DATA

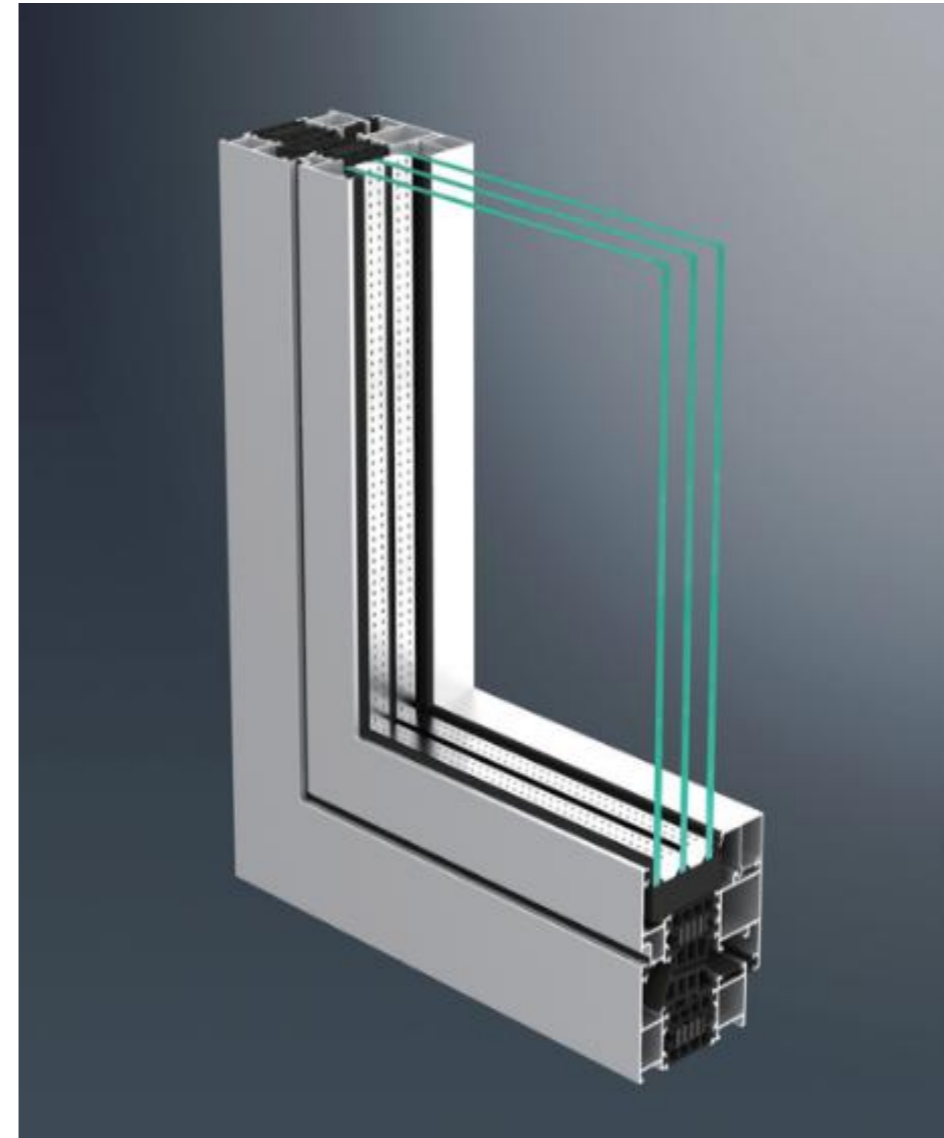
Visible width (Outside)	Frame/Sash	30mm
Profile Depth	Frame/Sash	65mm
Depth of glass groove		27mm
Glass Thickness		48mm

PERFORMANCE

Thermal Insulation	$U \leq 1.6 \text{ W/m}^2\text{K}$
Acoustic Performance	$\leq 45\text{dB}$
Air Tightness	0.4
Wind Load Resistance	$\geq 0.5\text{Kpa}$
Water Penetration	900 pa
Security Level	

SP80T

Awning
Casement
STAR SERIES



Superhouse P80 system is excellent heat insulating function, through the adoption of 39mm thermal insulation aluminum profile, it could keep the U-value less than 1.1w/m.k. It could not only satisfy users' strict requirement on physical function, but also is the flagship product in superhouse system. Comply with AAMA CSA WDMA 101/I.S.2/A440-11.

TECHNICAL DATA

Visible width (Outside)	Frame/Sash	30mm
Profile Depth	Frame/Sash	79mm
Depth of glass groove		27mm
Glass Thickness		61mm

PERFORMANCE

Thermal Insulation	$U \leq 1.4 \text{ W/m}^2\text{K}$
Acoustic Performance	$\leq 45\text{dB}$
Air Tightness	0.4
Wind Load Resistance	$\geq 0.5\text{Kpa}$
Water Penetration	900 pa
Security Level	



SP80T
HINGE DOOR
STAR SERIES



Superhosue P80 system is excellent heat insulating function, which belong to our star system with very high quality and with kick plate. It could realized inwards opening, outwards opening, low threshold and high threshold. Also there are different kinds of hardware for choose and it could meet C and U groove with multi point locking system.

TECHNICAL DATA

Visible width (Outside)	Frame/Sash	50mm
Profile Depth	Frame/Sash	80mm
Depth of glass groove		27mm
Glass Thickness		48mm

PERFORMANCE

Thermal Insulation	$U \leq 1.4 \text{ W/m}^2\text{K}$
Acoustic Performance	$\leq 45\text{dB}$
Air Tightness	0.4
Wind Load Resistance	$\geq 0.5\text{Kpa}$
Water Penetration	600 pa
Security Level	

SP75T

BI-FOLDING DOOR
STAR SERIES



Superhouse SP75T bifold doors, or folding sliding doors if you prefer, are a modern and innovative design statement that can transform an ordinary room and make it a feature of the house. It can be low threshold and high threshold. Available in a number of configurations using between 2 and 8 door leaves.

TECHNICAL DATA

Visible width (Outside)	Frame/Sash	36mm
Profile Depth	Frame/Sash	75mm
Depth of glass groove		29mm
Glass Thickness		51mm

PERFORMANCE

Thermal Insulation	$U \leq 2.4 \text{ W/m}^2\text{K}$
Acoustic Performance	$\leq 45\text{dB}$
Air Tightness	0.4
Wind Load Resistance	$\geq 0.5\text{Kpa}$
Water Penetration	600 pa
Security Level	

SP153T

Lift&Sliding door
STAR SERIES



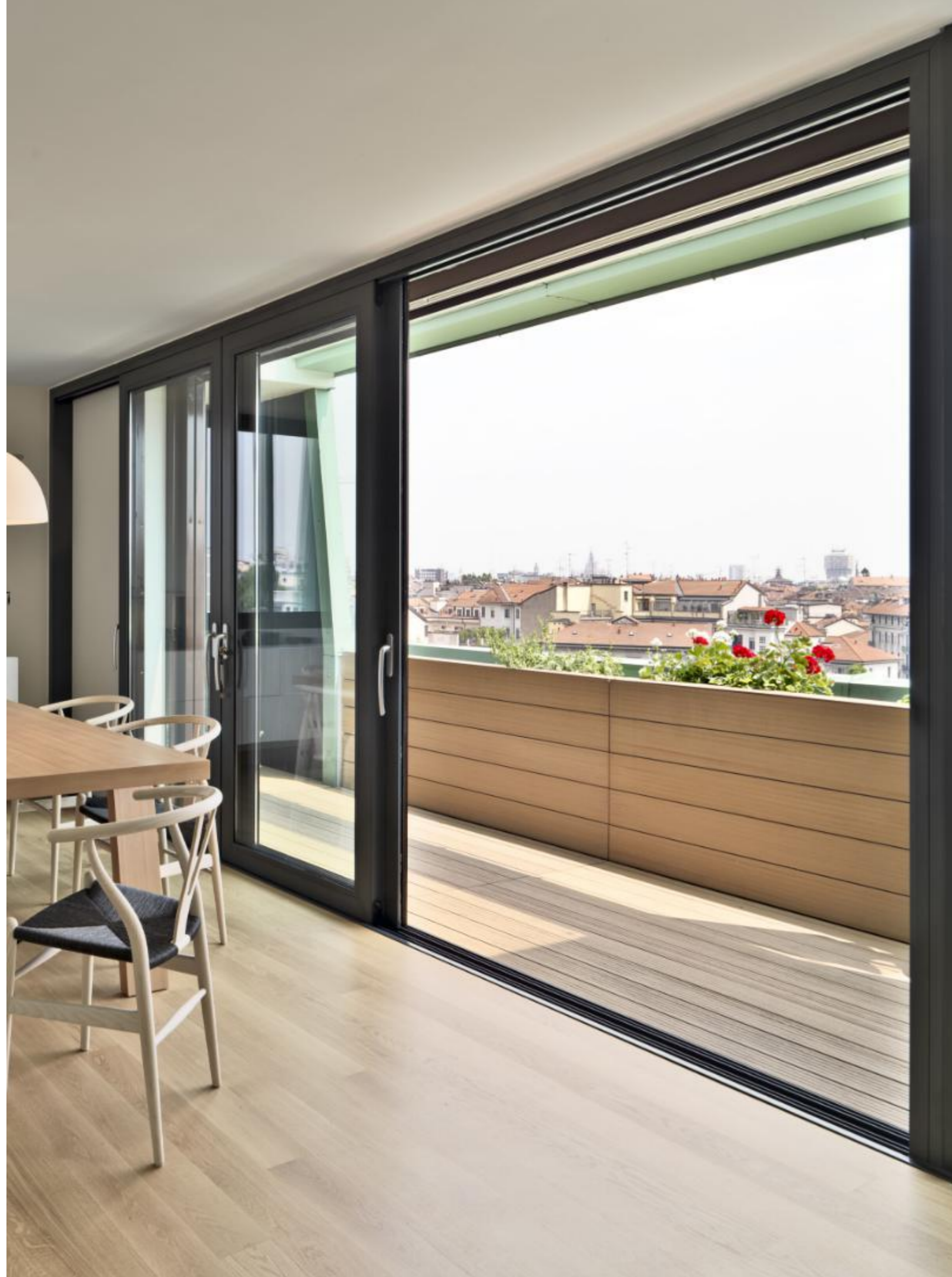
Superhouse SP153T system is a sliding and lift&sliding door with excellent thermal insulation. The perfect design maximizes glass area and enhances comfort, which system has a small threshold scheme to facilitate access to building. The lift and sliding door can accommodate large size glass door and bear up to 400kg which meets the requirement of anti theft performance.

TECHNICAL DATA

Visible width (Outside)	Frame/Sash	64mm
Profile Depth	Frame/Sash	153mm
Depth of glass groove		26mm
Glass Thickness		53mm

PERFORMANCE

Thermal Insulation	$U \leq 1.6 \text{ W/m}^2\text{K}$
Acoustic Performance	$\leq 45\text{dB}$
Air Tightness	0.4
Wind Load Resistance	$\geq 0.5\text{Kpa}$
Water Penetration	600 pa
Security Level	



SP239T

Lift&Sliding door
STAR SERIES



Superhosue SP239T system is a sliding and lift&sliding door wiellent thermal insulation. The perfect design max. glass area and enhances comfort, which system has a small threshold scheme to facilitate access to building. The lift and sliding door can accommodate large size glass door and bear up to 400kg which meets the requirement of anti theft performance.

TECHNICAL DATA

Visible width (Outside)	Frame/Sash	64mm
Profile Depth	Frame/Sash	239mm
Depth of glass groove		26mm
Glass Thickness		53mm

PERFORMANCE

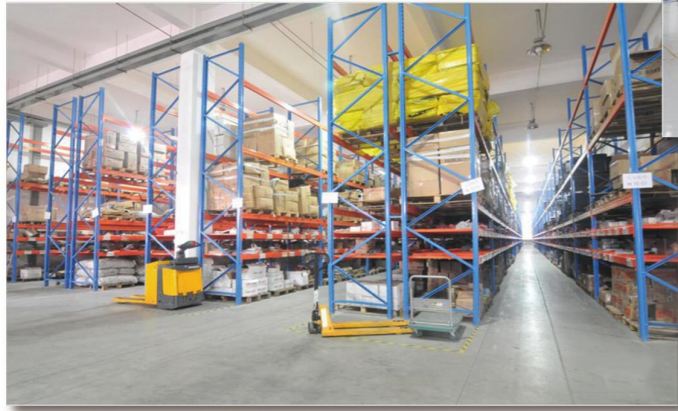
Thermal Insulation	$U \leq 1.6 \text{ W/m}^2\text{K}$
Acoustic Performance	$\leq 45 \text{ dB}$
Air Tightness	0.4
Wind Load Resistance	$\geq 0.5 \text{ Kpa}$
Water Penetration	600 pa
Security Level	

FACTORY VIEW

For pursue outstanding quality,
we import national standard high
quality auto-machines



Dust-Free Plant



For pursue outstanding quality,
we import national standard high
quality auto-machines



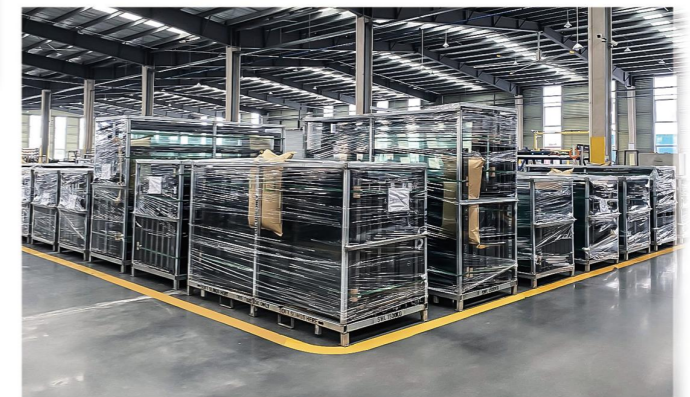
Dust-Free Plant



Meanwhile, under international standard
quality system, which helps our quality
better than competition's

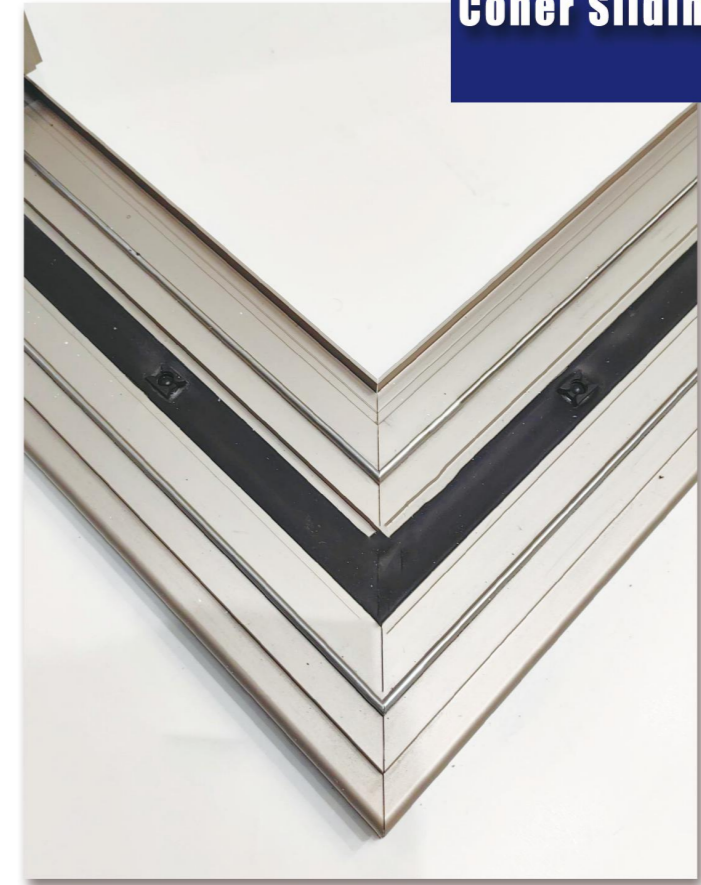


AUTO-MACHINES

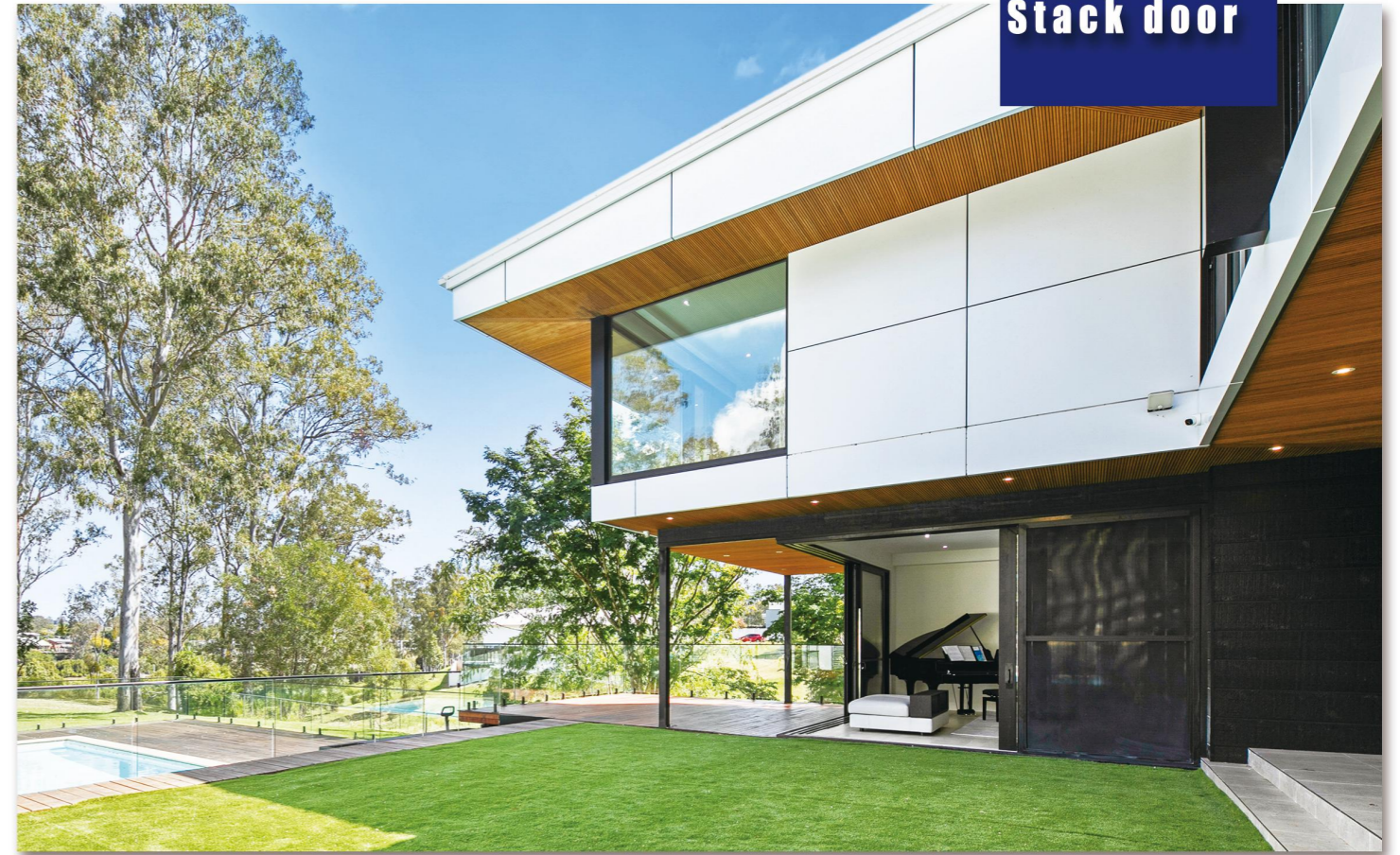


SGS Approved Packing

**Application
Coner Sliding**



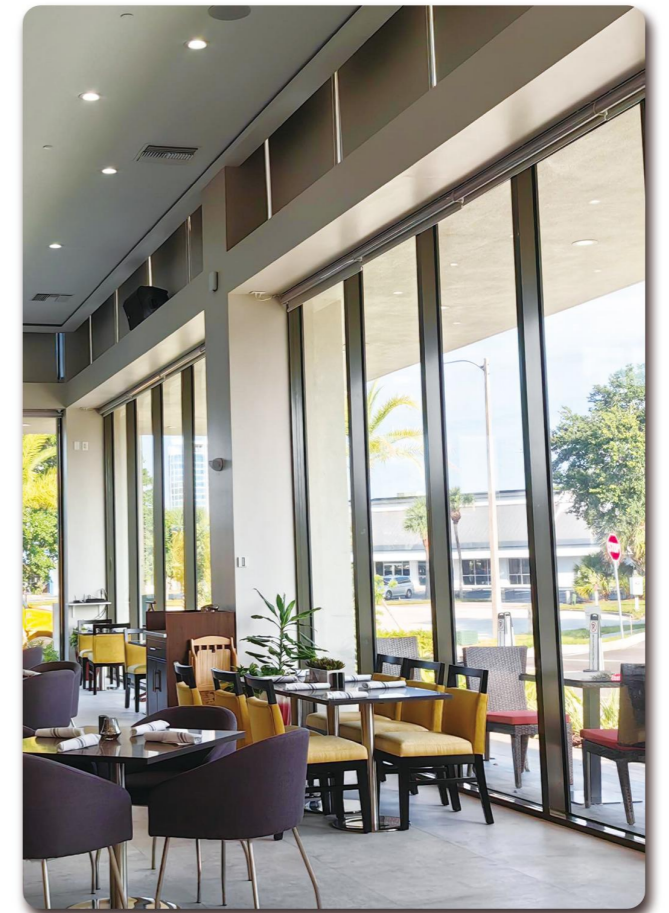
Application
Stack door



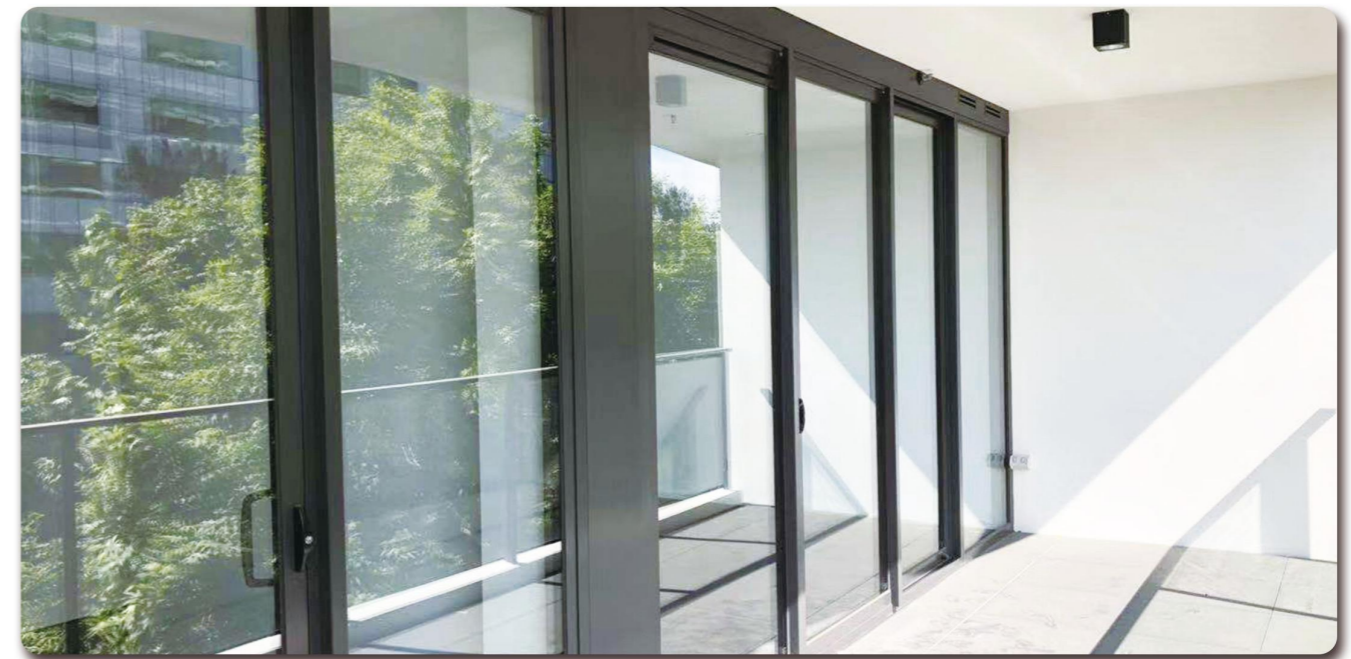
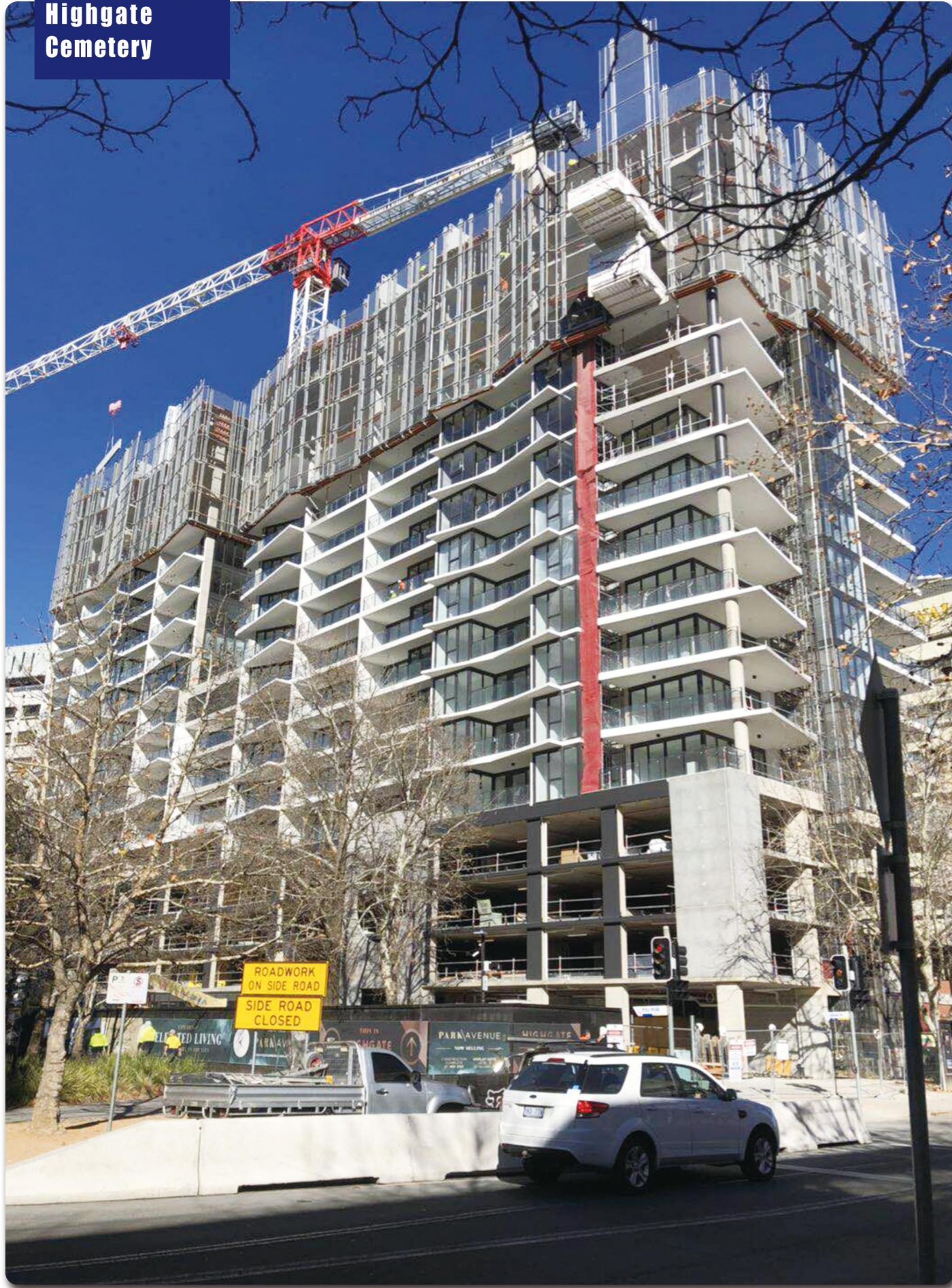
**Application
Energy-Saving
System**



**Application
Cambria hotel**



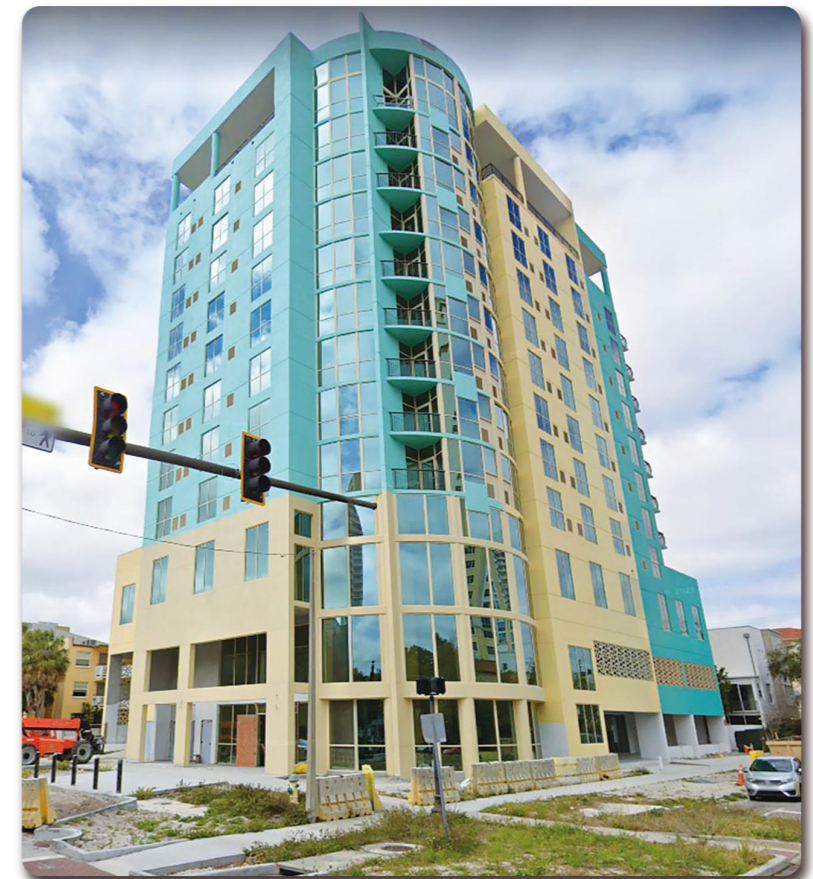
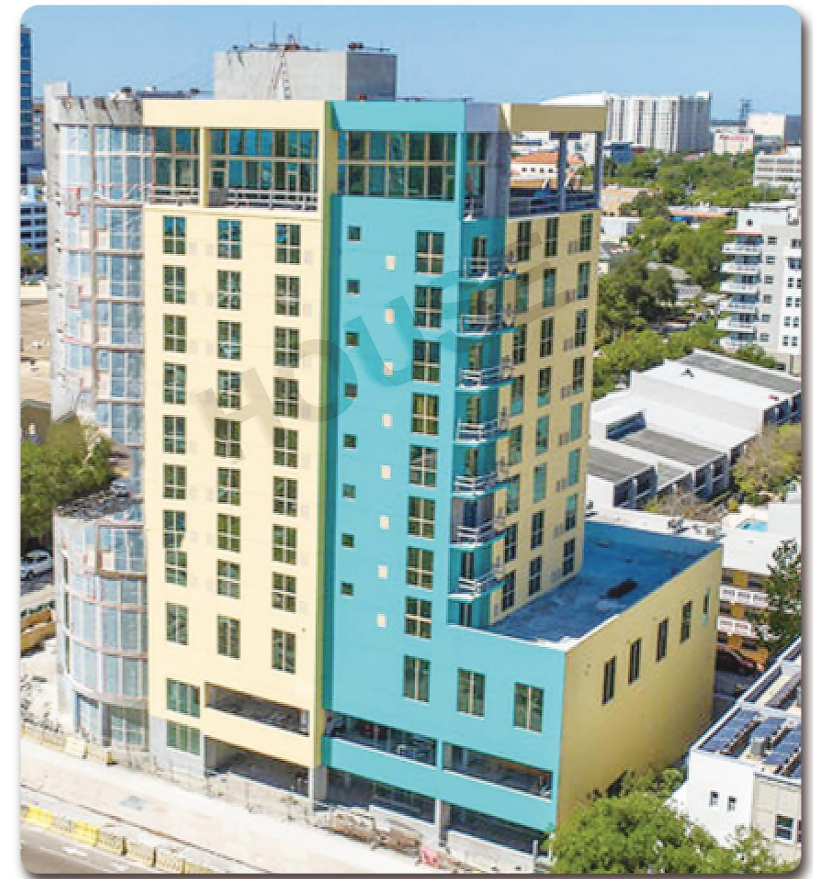
Projects
Highgate Cemetery



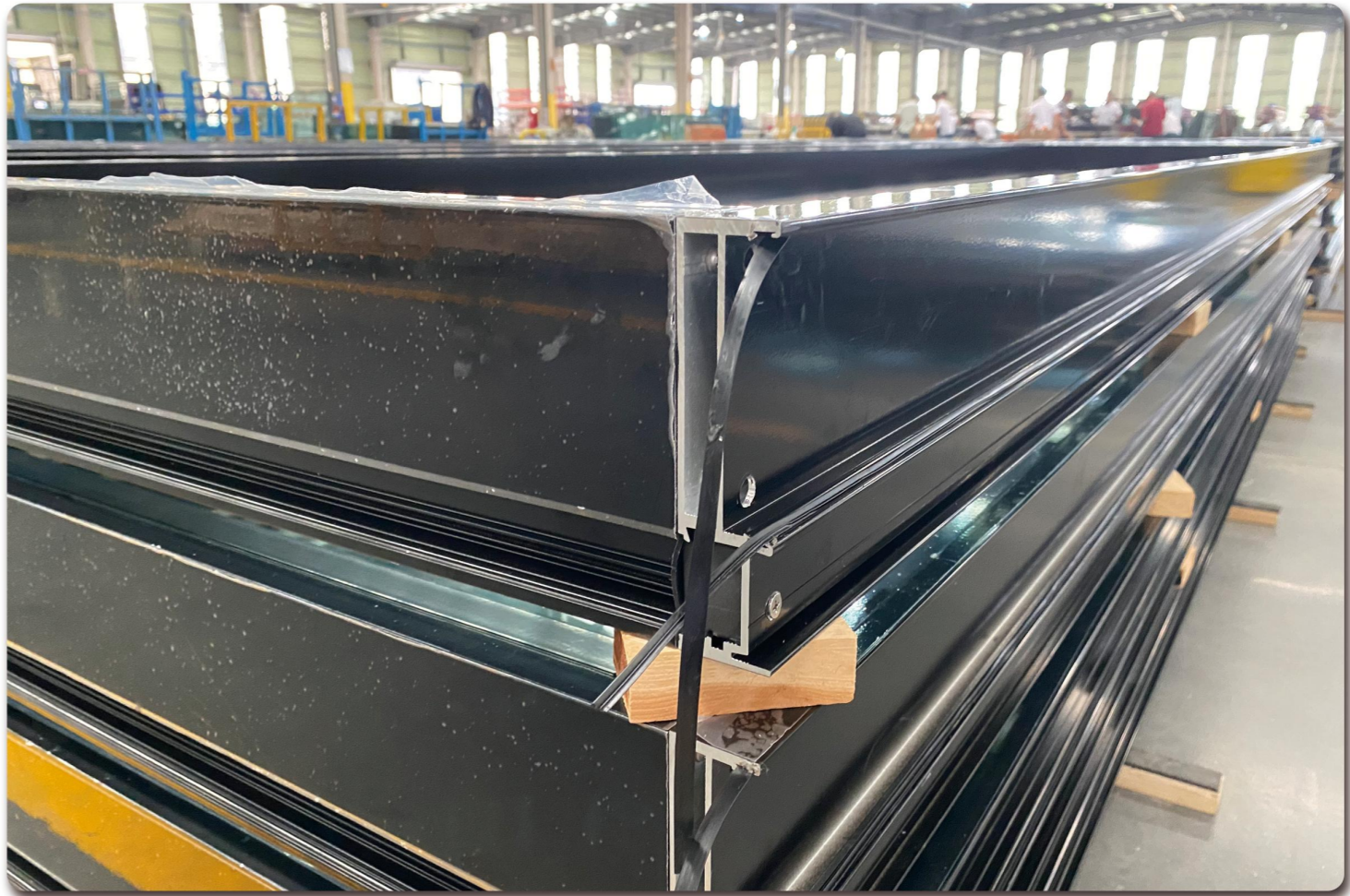
Projects
UK apartment



Projects
Miami hotel



Projects
petrol station



高新技术企业证书

企业名称: 江苏叔伯屋门窗系统有限公司 证书编号: GR202232010496

发证时间: 2022年12月12日 有效期: 三年

批准机关:





High Tech Enterprise Certificate




CERTIFICATE OF MEMBERSHIP

2019

This is to certify that

Shanghai Superhouse Building Material Co., Ltd

MEMBER NUMBER: 844-02

is a current member of AGA-AGGA Limited and undertakes to abide by the AGA-AGGA Rules and Code of Ethics.



AGWA ACCREDITED

This is to certify

Shanghai Superhouse Building Material Co., Ltd

MEMBER NUMBER: 844-02

Has met the requirements of the annual AGWA Skills & Training audit conducted by an AGWA Accredited Independent Auditor and demonstrated technical competence through training, skills development and continuing professional development.

SKILLS & TRAINING

The AGWA Limited is a NATA Accredited Inspection Agency. Accreditation Number: 13739
Through the issuance of this Certificate, the AGWA is not vesting NATA Accreditation to the Member.



STANDARDSMARK LICENCE

SAI Global hereby grants:

Shanghai Superhouse Building Materials

No. 10 Hangfan Road, Pudong New Area, Shanghai, China

StandardsMark Licence

Manufactured to:

AS 2047-2014 - Windows and external glazed doors in buildings - This certification excludes installation

The StandardsMark Licence grants the right to use the STANDARDSMARK as shown below only in respect of the goods described and detailed in the Schedule which are produced by the Licensee or on behalf of the Licensee and which comply with the appropriate Standard referred to above as from time to time amended. The Licence is granted subject to the rules governing the use of the STANDARDSMARK and the Terms and Conditions for certification and licence. The Licensee covenants to comply with all the Rules and Terms and Conditions.

Certificate No: SMK40350

Issued: 16 October 2019 Originally Certified: 11 September 2014
Expires: 10 September 2024 Current Certification: 8 October 2019

Heather Mahon
Head of Global Technical Services
SAI Global Assurance

Australia Standard

NFRC Product Certificate of Authorization

Manufacturer: Shanghai Superhouse Building Material Co., Ltd	Product Series: P80 Tilt and Turn Window
Street: No. 10 Hangfan Road, Pudong New Area, Shanghai	Product Type: DATT
City/State/Zip: Shanghai, Shanghai 201316	
Simulation Lab: SFTL	Test Lab: TFTL
Sim Report #: 10849	Test Report #: 10861
Sim Report Date: 07/31/2019	Test Date: 07/25/2019
Revised Date:	Revised Date:
Auth. Ratings: U-Factor, SHGC, VT, CR	Test Method: NFRC 102
Procedural Year: 2017	Procedural Year: 2017
Initial Certification Date: 10/23/2019	
Re-Certification Date:	
Expiration Date: 07/25/2024	
CPD Product Line Number: SHN-M-1	http://search.nfrc.org/search/cpdcpt_detail.aspx?cpdnum=SHN-M-1
Product Number Range: 00001-00001 to 00013-00001	

Comments:

I hereby certify that all requirements for NFRC Certification Authorization have been met and that the above information is true and correct, to the best of my knowledge.

Authorized IA Signature:




NOTICE OF PRODUCT CERTIFICATION

CERTIFICATION NO: N1015014-R1
DATE: 10/13/2020

CERTIFICATION PROGRAM: Structural
COMPANY: Shanghai
CODE: 2596-1
REVISION DATE: 11/18/2021

COMPANY NAME AND ADDRESS	PRODUCT DESCRIPTION
Shanghai Superhouse Building Material Co., LTD Level 5, Unit 10, No. 8666 Hunan Highway Pudong New Area, Shanghai China 201314	Series "P80" Aluminum Tilt & Turn Window Configuration: X Glazing: Insulating Glass (Tempered) Frame: W-1200mm(47.24") H-1800mm(70.87") Sash: W-1120mm(44.09") H-1720mm(67.72") DLO: W-975mm(38.35") H-1574mm(61.97")
SPECIFICATION	PRODUCT RATING
AAMA/WDMA/CSA 101/LS2/A440-11	Class CW-PG30 1200 x 1800 (47 x 71)-DAW Design Pressure: ±1440 Pa (±30 psf) Water Penetration Resistance Pressure: 400 Pa (±9.3 psf)

Product Tested By: Intertek - Shanghai
Report No: 180801008SHF-BP-2
Expiration Date: August 31, 2021

Administrator's Signature: 

NATIONAL ACCREDITATION AND MANAGEMENT INSTITUTE, INC.

MIAMI-DADE COUNTY DEPARTMENT OF REGULATORY AND ECONOMIC RESOURCES (RER) BOARD AND CODE ADMINISTRATION DIVISION NOTICE OF ACCEPTANCE (NOA)

Shanghai Superhouse Building Material Co., Ltd. ← ONLY ONE FROM CHINA
No. 8666 Hunan Hwy. Rd. Unit 10, Level 5
Pudong New Area, Shanghai, China 201314

SCOPE: This NOA is being issued under the applicable rules and regulations governing the use of construction materials. The documentation submitted has been reviewed and accepted by Miami-Dade County RER - Product Control Section to be used in Miami Dade County and other areas where allowed by the Authority Having Jurisdiction (AHJ).

This NOA shall not be valid after the expiration date stated below. The Miami-Dade County Product Control Section (in Miami Dade County) and/or the AHJ (in areas other than Miami Dade County) reserve the right to have this product or material tested for quality assurance purposes. If this product or material fails to perform in the accepted manner, the manufacturer will incur the expense of such testing and the AHJ may immediately revoke, modify, or suspend the use of such product or material within their jurisdiction. RER reserves the right to revoke this acceptance if it is determined by Miami-Dade County Product Control Section that this product or material fails to meet the requirements of the applicable building code.

This product is approved as described herein and has been designed to comply with the Florida Building Code, including the High Velocity Hurricane Zone.

DESCRIPTION: Series "SP60" Outswing Aluminum Casement Window - L.M.I.

APPROVAL DOCUMENT: Drawing No. AD21-40, titled "SP60 Casement Window - L.M.I.", sheets 1 through 8 of 8, dated 11/25/21, with revision #1 dated 10/12/21, prepared by MGY Engineering, Inc., signed and sealed by Yiping Wang, P.E., bearing the Miami-Dade County Product Control Approval stamp with the Notice of Acceptance number and approval date by the Miami-Dade County Product Control Section.

MISSILE IMPACT RATING: Large and Small Missile Impact Resistant

LABELING: Each unit shall bear a permanent label with the manufacturer's name or logo, city, state, model/series, and following statement: "Miami-Dade County Product Control Approved", unless otherwise noted herein.

RENEWAL: of this NOA shall be considered after a renewal application has been filed and there has been no change in the applicable building code negatively affecting the performance of this product.

TERMINATION: of this NOA will occur after the expiration date or if there has been a revision or change in the materials, use, and/or manufacture of the product or process. Misuse of this NOA as an endorsement of any product, for sales, advertising or any other purposes shall automatically terminate this NOA. Failure to comply with any section of this NOA shall be cause for termination and removal of NOA.

ADVERTISEMENT: The NOA number preceded by the words Miami-Dade County, Florida, and followed by the expiration date may be displayed in advertising literature. If any portion of the NOA is displayed, then it shall be done in its entirety.

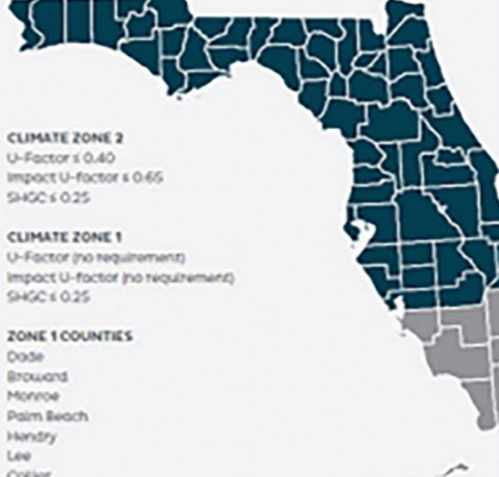
INSPECTION: A copy of this entire NOA shall be provided to the user by the manufacturer or its distributors and shall be available for inspection at the job site at the request of the Building Official. This NOA consists of this page 1 and evidence pages E-1 and E-2, as well as approval document mentioned above.

The submitted documentation was reviewed by Manuel Perez, P.E.

DA No. 22-0125-02
E-1
E-2
E-3

FLORIDA BUILDING CODE 6TH EDITION (2017)

Residential Section
Replacement or New Construction



CLIMATE ZONE 2
U-Factor ≤ 0.40
Impact U-factor ≤ 0.65
SHGC ≤ 0.25

CLIMATE ZONE 1
U-Factor (no requirement)
Impact U-factor (no requirement)
SHGC ≤ 0.25

ZONE 1 COUNTIES
Dade
Browards
Monroe
Palm Beach
Handry
Lee
Collier

FLORIDA DEPARTMENT OF BUSINESS & PROFESSIONAL REGULATION

Product Approval
USER: Public User

Product Approval Menu > Product or Application Search > Application List

Code Version	2020 FL#
Application Type	ALL Product Manufacturer
Category	ALL Subcategory
Application Status	ALL Compliance Method
Quality Assurance Entity	ALL Quality Assurance Entity Contract Expired
Product Model, Number or Name	ALL Product Description
Approved for use in HVHZ	ALL Approved for use outside HVHZ
Impact Resistant	ALL Design Pressure
Other	ALL

Search Results - Applications

FL#	Type	Manufacturer
FL29092-R2 History	Revision	Shanghai Superhouse Building Material Co Ltd Category: Exterior Doors Subcategory: Swinging Exterior Door Assemblies
FL29474-R3 History	Revision	Shanghai Superhouse Building Material Co Ltd Category: Panel Walls Subcategory: Storefronts
FL30906-R1 History	Revision	Shanghai Superhouse Building Material Co Ltd Category: Exterior Doors Subcategory: Sliding Exterior Door Assemblies
FL30922-R1 History	Revision	Shanghai Superhouse Building Material Co Ltd Category: Windows Subcategory: Awning
FL30922-R1 History	Revision	Shanghai Superhouse Building Material Co Ltd Category: Windows Subcategory: Horizontal Slider
FL32506-R1 History	Revision	Shanghai Superhouse Building Material Co Ltd Category: Exterior Doors Subcategory: Swinging Exterior Door Assemblies
FL32506-R1 History	New	Shanghai Superhouse Building Material Co Ltd Category: Windows Subcategory: Fixed

North American Hurricane Proof



APPROVED SUPPLIER





Scan code addition

new journey
To the future

doors & Windows

